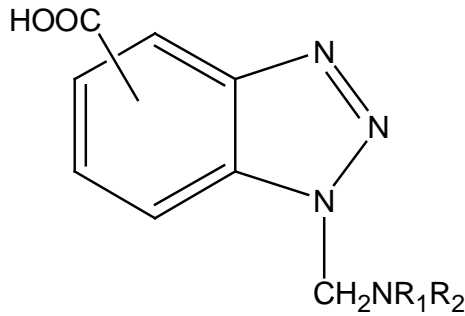


Product Data Sheet: FCAMM0B2100811A

AMM-0B4 Copper Adhesion Promoter

ACTIVE INGREDIENTS



where $R_1 = R_2 = C_3H_6OH$

CHARACTERISTICS

- Excellent adhesion to a variety of metals
- Excellent corrosion resistance to a variety of metals
- Excellent resistance to acids and alkalines

SPECIFICATIONS – Following are the initial guidelines. Details remains to be established

Item	Value	Method
Appearance	Amber translucent solution	
Active Ingredients	50 ± 1 %	
Solvent	PM (Propyleneglycol monomethyl ether)	
Density, 25°C	1.05 ± 0.01 g/cm ³	
pH value, 25°C:	5.0 ± 0.5	1% in water
Flash point, °C	< 33	Close Cup
Heavy Metal Content	< 20 ppm	ICP

PACKING: 20kg in plastic pails or 200kg in plastic drums

We strive our best and believe in the accountability of information provided herein. However, whether expressed or implied, we warranty no particular applications of this product. It is at disposal of our customers' own tests, to meet their particular requirements or performance.