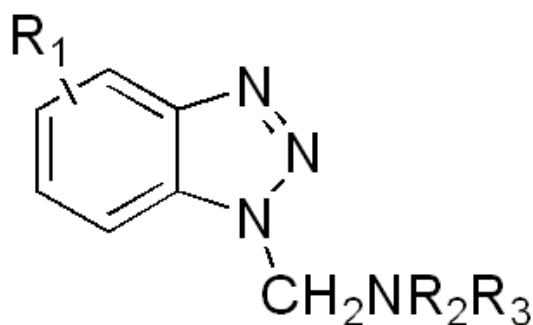


Product Data Sheet: FCCCI01111205B

CCI-01 Copper Adhesion Promoter

ACTIVE INGREDIENTS



Where $R_1 = \text{CH}_3$ & $R_2 = R_3 = i\text{-CH}_3\text{H}_6\text{OH}$

Characteristics:

- Excellent adhesion to a variety of metals
- Excellent corrosion resistance to a variety of metals
- Excellent resistance to acids and alkalines

Specifications:

Product Specifications:

Appearance	Amber clear
Active Ingredients	50 ± 2%
Solvent	1-Methoxy-2-propanol
Density, 20 °C	0.94 ~ 1.06 g/cm ³
Melting point	< 5 °C
Flash point	33 °C

Packing: 18kg Net Weight in Steel Pail

We strive our best and believe in the accountability of information provided herein. However, whether expressed or implied, we warranty no particular applications of this product. It is at disposal of our customers' own tests, to meet their particular requirements or performance.